

# Project News



## Montgomery Greene HOA Roadway Reconstruction & Infrastructure Maintenance Project

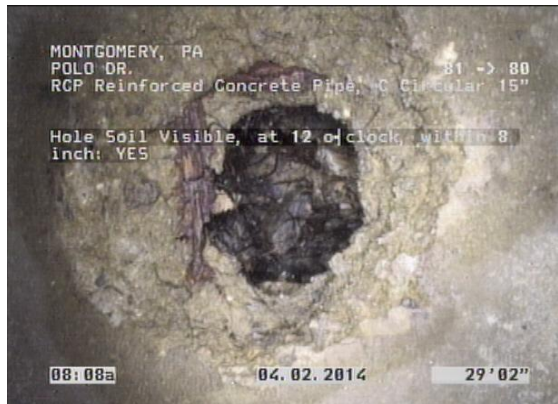
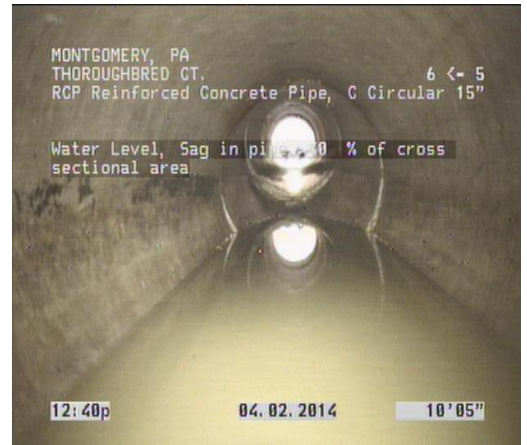
Metz Engineers completed an assessment for the Montgomery Greene HOA on Stump Road in Montgomery Township, Montgomery County, culminating in the repair of dozens of underground storm sewer problems, replacement of curb, sidewalk, driveway aprons and handicap ramps.

Over the course of two (2) construction seasons, the entire roadway pavement was stripped down to its base and rebuilt with new paving. This method of reconstruction essentially gave the community new roads with a very improved surface life compared to most surface treatments.



Aerial View of Community ±1.4 Miles of Roadway

- Storm sewer system piping televised April 2014
- 159 areas identified as questionable or deficient
- 39 areas required repair of broken joints, open holes, settlements & pipes holding water prior to Roadway Reconstruction



- Inlets assessed March 2014
- Deficiencies included failing risers, failing grates and frames, lack of pargeted connections, construction deficiencies





During our evaluation Pavement Core Samples were taken and other deficiencies were noted including:

- Minimal Crown
- Alligatoring
- Joint Failure
- Areas of Base Failure
- Bird Baths, Puddles



*"The level of professionalism, knowledge and attention to detail has been excellent. Your company, under your direction, and the personnel assigned to this project are an example of customer focused, results driven deliverables. The presentations created and delivered at our community meetings were excellent and contributed to the community accepting and endorsing the project."*

*The vendors selected to address the work are of the highest quality and were truly dedicated to satisfying our requirements and needs. Jack, Joe and you were a pleasure to work with. I would be happy to give your company a reference in the future."*

*Bill Hoare, Montgomery Greene  
Board President*



**Metz  
Engineers®**  
Civil Engineers & Land Surveyors